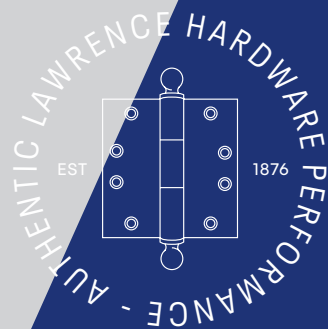


LAWRENCE[®]

HARDWARE



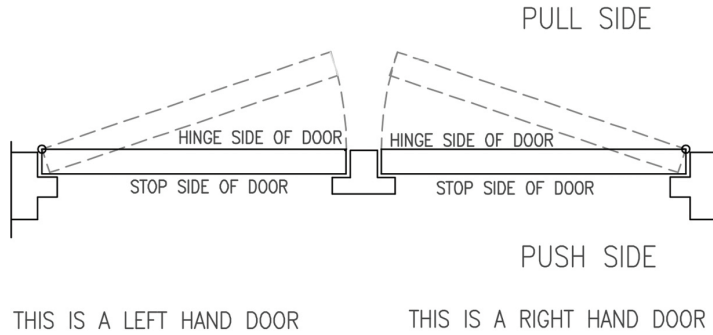
LH 303

INSTALLATION INSTRUCTIONS

INSTALLATION INSTRUCTIONS

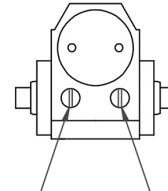
■ CHART TO DETERMINE HAND OF DOOR

■ FINAL ADJUSTMENT AND REGULATING PROCEDURES



REGULATING DOOR SPEED AND LATCHING SPEED

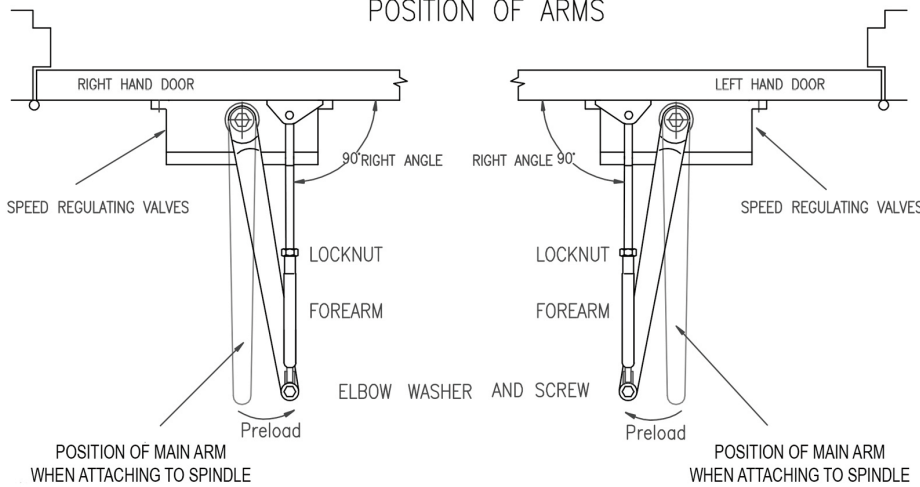
TURN SPEED REGULATING VALVE COUNTER-CLOCKWISE TO SLOW DOWN -OR- COUNTER-CLOCKWISE TO SPEED UP DOOR MOVEMENT



THIS VALVE CONTROLS LATCHING SPEED

THIS VALVE CONTROLS DOOR SWEEP SPEED

STANDARD INSTALLATION POSITION OF ARMS

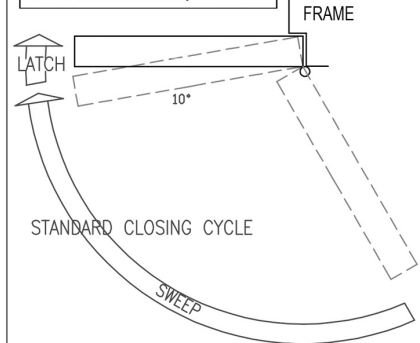


CLOSING SPEED (SWEEP) CONTROL



CAUTION:

Removing valves will cause hydraulic fluid to leak and void warranty.

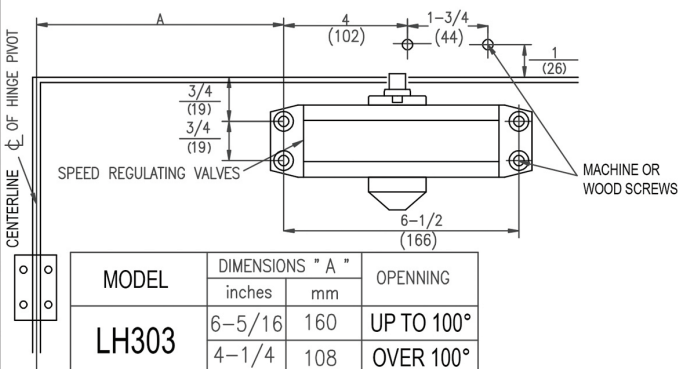


ATTENTION:

ADJUST CLOSING SPEED TIME TO BETWEEN 4 TO 6 SECOND FROM 90°.

STANDARD INSTALLATION: PULL SIDE MOUNT

- RIGHT HAND DOOR ILLUSTRATED SAME DIMENSIONS APPLY TO LEFT HAND DOOR
- MEASURED FROM HINGE \perp CENTERLINE DIMENSIONS ARE IN $\frac{\text{inches}}{(\text{mm})}$
- NOT TO SCALE DRAWING

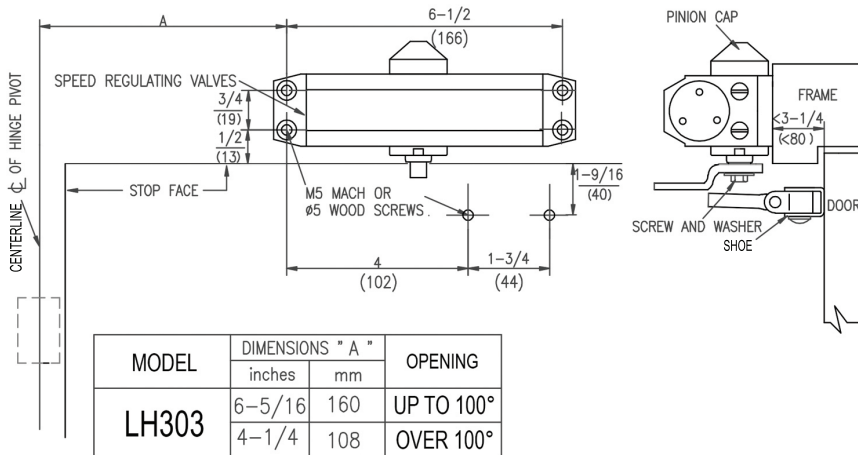


INSTALLATION INSTRUCTIONS

1. SELECT DEGREE OF DOOR OPENING. USE DIMENSIONS SHOWN IN CHART AND ILLUSTRATION ABOVE TO MARK LOCATION OF ATTACHING SCREWS ON DOOR AND FRAME.
2. ASSEMBLE MAIN ARM TO CLOSER.
3. ATTACH CLOSER TO DOOR WITH SPEED REGULATING VALVES FACING HINGE.
4. ATTACH THE SHOE OF THE FOREARM TO FRAME.
5. ADJUST LENGTH OF FOREARM TO POSITION FOREARM AT RIGHT ANGLE (90°) CONNECT TO MAIN ARM AT ELBOW PIN.
6. SNAP PINION CAP OVER SPINDLE AT BOTTOM OF CLOSER.
7. ADJUST DOOR CLOSER VALVES AS PREFERRED.

TOP JAMB INSTALLATION: PUSH SIDE MOUNT

- LEFT HAND DOOR ILLUSTRATED SAME DIMENSIONS APPLY TO RIGHT HAND DOOR
- DIMENSIONS ARE IN $\frac{\text{inches}}{\text{(mm)}}$
- MEASURED FROM HINGE \perp CENTERLINE
- NOT TO SCALE DRAWING

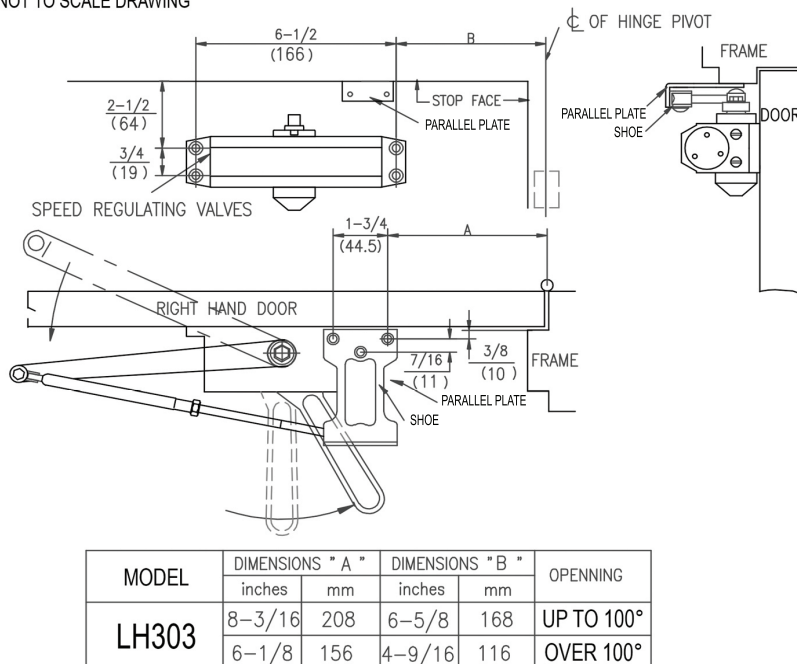


INSTALLATION INSTRUCTIONS

1. SELECT DEGREE OF DOOR OPENING. USE DIMENSIONS SHOWN IN CHART AND ILLUSTRATION ABOVE TO MARK LOCATION OF ATTACHING SCREWS ON DOOR AND FRAME.
2. ASSEMBLE MAIN ARM TO CLOSER.
3. ATTACH CLOSER TO FRAME WITH SPEED REGULATING VALVES FACING HINGE.
4. ATTACH THE SHOE OF THE FOREARM TO DOOR.
5. ADJUST LENGTH OF FOREARM TO POSITION FOREARM AT RIGHT A RIGHT ANGLE (90°) CONNECT TO MAIN ARM AT ELBOW PIN.
6. SNAP PINION CAP OVER SPINDLE AT BOTTOM OF CLOSER.
7. ADJUST DOOR CLOSER VALVES AS PREFERRED.

PARALLEL ARM INSTALLATION: PUSH SIDE MOUNT

- RIGHT HAND DOOR ILLUSTRATED SAME DIMENSIONS APPLY TO LEFT HAND DOOR
- MEASURED FROM HINGE \perp CENTERLINE
- DIMENSIONS ARE IN $\frac{\text{inches}}{\text{(mm)}}$
- NOT TO SCALE DRAWING



INSTALLATION INSTRUCTIONS

1. SELECT DEGREE OF DOOR OPENING. USE DIMENSIONS SHOWN IN CHART AND ILLUSTRATION ABOVE TO MARK LOCATION OF ATTACHING SCREWS ON DOOR AND FRAME.
2. ATTACH CLOSER TO DOOR WITH SPEED REGULATING VALVES FACING OPENING (NOT TO THE HINGE SIDE).
3. ATTACH MAIN ARM AS FOLLOWS
(A) PLACE OPEN END WRENCH ON BOTTOM SHAFT & TURN TOWARD HINGE ABOUT 37°.
(B) PLACE MAIN ARM ON TOP SHAFT, INSERT ARM SCREW INTO TOP OF SHAFT AND TIGHTEN.
4. ADJUST PARALLEL PLATE TO TOP FRAME AS SHOWN.
5. ATTACH ARM/SHOE OF FOREARM TO PARALLEL PLATE.
6. ADJUST LENGTH OF FOREARM TO POSITION FOREARM PARALLEL TO FRAME, THEN CONNECT TO MAIN ARM AT ELBOW PIN.
7. SNAP PINION CAP OVER SPINDLE AT BOTTOM.
8. ADJUST DOOR CLOSER VALVES AS PREFERRED.

APPLICABLE DOOR WEIGHT 40-65 kg (85-140 lbs)

If you have any questions regarding installation, contact us at
1.888.737.6515, email us at info@LawrenceHardwareOnline.com
or visit us online at LawrenceHardwareOnline.com